

# THE RIPPLE

August 2023



## PARISH SERVICES

### SUNDAY SERVICES:

8:00am 4<sup>th</sup> Sunday Holy Communion

11:00am 1<sup>st</sup> Sunday Informal Family Service

11:00am Other Sundays Parish Communion

6:30pm 3<sup>rd</sup> Sunday Informal Service

4:00pm 2<sup>nd</sup> Sunday Messy church (no service in August)

**WEEKDAYS:** 9:30am Holy Communion - Thursday

**RECTOR:** Reverend Suzan Williams Tel:674948  
The Rectory, Whittington SY11 4DF – email: revwilliams1991@icloud.com

**CHURCHWARDENS:**  
Mr M Phipps, Wesley Cottage, Babbinswood, Whittington Tel:670940  
Mrs G Roberts, 4 Western Avenue, Whittington, SY11 4BP Tel:662236  
e.mail: gillian28.4dg@gmail.com

**VERGER:** Mr D. Howard, 16 Yew Tree Avenue, Whittington Tel:656389

**ORGANIST:** Mr K. Griffiths, 12 Park Crescent, Park Hall Tel:662116

**BAPTISM SECRETARY:**  
Mrs Margery Mellor, 10 Boot Street, Whittington Tel:681036  
e.mail: i.mellor@tiscali.co.uk

**MAGAZINE:**  
Editor: Miss A Ward, Manor Garden, 5 Boot Street, Whittington – eaw4@btinternet.com Tel:672838

Distribution: Mrs C Hughes, 9 Rosehill Close, SY11 4DY Tel:662417

**WHITTINGTON C of E PRIMARY SCHOOL:**  
Headteacher: Mr Carl Rogers Tel:662269  
e.mail: admin@whittington.shropshire.sch.uk

**SCHOOL WEBSITE:** www.whittingtonschool.co.uk

**“THE RIPPLE”**  
**(Whittington Parish Church Magazine)**  
**Vol 36 No 4**

August 2023

**Rectors Ramblings**

As I sit to write this month's Rectors Ramblings, we've just experienced the hottest June on record and there is the strong possibility that we will be facing water shortages, and hosepipe bans. Even though the beginning of July is proving to be a bit more variable, we haven't had anywhere near enough rain; and I know the local farming community will be praying for it.

It's interesting isn't it, that across the world weather patterns are so much more variable than they would have been in the past. There was a time when, if you planned your wedding, or a family gathering, between June and August, you would, pretty much, be guaranteed that even if it wasn't hot, it would be dry. Now we just can't make that assumption.

Now I know there are those who don't recognise the effects of global warming, however obvious, and visible, the cause and effect, might have been in recent weeks. Tic Tok has come under scrutiny for refusing to take down videos pro-portioning that global warming is untrue. How dangerous mis-information can be!

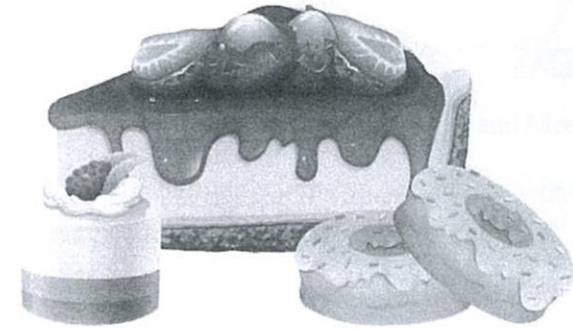
Genesis 2:15 says "The Lord God placed the man in the Garden of Eden to tend and watch over it."

We need to take our role seriously, and do the things we can to care for the earth that we are custodians of and for the planet we live on. If we each do our bit then we will be preserving what we are blessed with now, and for future generations to come.

Every Blessing

Suzan

# PRAISE AND PUDDINGS



## SUNDAY 20<sup>th</sup> AUGUST

### 5:00pm

In the Rectory Garden  
Walsham How Crescent

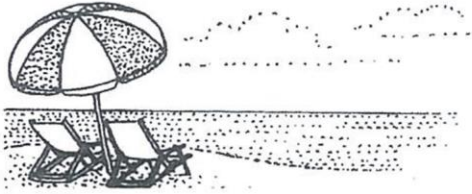
*Come along and sing your favourite hymns*

*(Please send your choice in advance)*

### AND BRING A PUDDING

Contact Suzan for more details:

[Revwilliams1991@icloud.com](mailto:Revwilliams1991@icloud.com)/01691 674948



# August 2023

## DIARY

- 2 7:30pm Monthly Whist Drive in the Senior Citizens' Hall, £2.50 including light refreshments
- 3 9:30am Holy Communion
- 5 136<sup>th</sup> Annual Oswestry Show at Park Hall
- 6 **NINTH SUNDAY AFTER TRINITY  
TRANSFIGURATION OF OUR LORD**
- 11:00am Informal Service
- 7 10:30am-12:00noon Cameo in church (Come and Meet Each Other)
- 10 9:30am Holy Communion
- 13 **TENTH SUNDAY AFTER TRINITY**
- 11:00am Parish Communion
- 14 **LAST DAY** for magazine material for the September edition of "The Ripple" all material to Anne Ward, 5 Boot Street, Whittington – eaw4@btinternet.com
- 10:30am-12:00noon Cameo in church (Come and Meet Each Other)
- 15 9:00am First pick-up at Rosehill for Whittington Senior Citizens Coach Trip to the Black Country Museum; further details on pages 8-10
- 17 9:30am Holy Communion
- 4

- 20 **ELEVENTH SUNDAY AFTER TRINITY**
- 11:00am Parish Communion
- 5:00pm Praise and Pudding in the Rectory Garden; further details page 3
- 21 10:30am-12:00noon Cameo in church (Come and Meet Each Other)
- 22 12:00noon Whittington Senior Citizens monthly lunch at the White Lion; further details page 8-10
- 24 **ST BARTHOLOMEW**
- 9:30am Holy Communion
- 26 from 10:30am Whittington Cricket and Bowls Club Car Treasure Hunt; further details on pages 10-11
- 27 **TWELFTH SUNDAY AFTER TRINITY**
- 8:00am Holy Communion
- 11:00am Parish Communion
- 7:00 for 7:30pm Bingo at the White Lion
- 28 **BANK HOLIDAY MONDAY**
- 12:00 – 4:00pm Whittington Together Village Fete at the Castle; further details on page 7
- 31 9:30am Holy Communion

### **Extracts from the Parish Registers for the months of May/June 2023**



### **HOLY BAPTISM**

"We welcome you into the Lord's Family"

4<sup>th</sup> June 2023 Mason Rhys Bagguley  
Of Whittington Road, Oswestry



## REQUIESCAT IN PACE

“May the Souls of the Faithful Departed Rest in Peace”

29<sup>th</sup> May 2023

Joan Marjory Hashfield  
aged 89 of Glentworth Close, Morda



## THERE IS STILL TIME!



Our Parish Church is having a “**Bottle Stall**” at Oswestry Show on Saturday 5<sup>th</sup> August, and there is still time for you to contribute to it. The church requires a lot of work to the building – **Please help us** – any contribution is warmly welcomed (no cleaning fluids thank you). Leave with Suzan or

Churchwardens, or you can even bring them on the day, its never too late to help, and of course try your luck at the same time!

**Mark Jones**

## EATING LATE AT NIGHT

It is not good to eat late at night, but it is very tempting at times. At least you can reduce the damage by avoiding certain types of food.



While many people blame alcohol for a poor night's sleep, food high in processed carbohydrates, saturated fats, and sugar can also affect sleep quality, according to recent research published in the journal *Obesity*.

As one expert explains, such foods “upset our metabolism.” Eating sugar late at night overstimulates you, as the rising blood sugar prepares your body for activity. When we eat late at night, our body temperature rises. But when we are preparing to fall asleep, our body temperature falls, so eating late goes against our body's natural desire to drop in temperature.”

**Free speech** – We live in a free country where a man can say what he thinks, as long as he isn't afraid of his wife, his neighbours, his employer, his customers or the government.

**Obstinate** – The clergyman was walking through the village one day when he met one of his parishioners. “How's your cold, Donald?” he asked. “Very obstinate” came the reply. “And how is your wife?” “About the same.”

**WHITTINGTON SENIOR CITIZENS  
Over 50's Club – Recycled Teenagers**

We had another fantastic day trip out on 20<sup>th</sup> June, when we had a tour of Anglesey. We were very apprehensive, whilst waiting for our Owen's Coach to pick us up, as it was absolutely pouring with rain. We left at about 9:30am and had not gone far before the rain stopped and the clouds began to clear. Our driver took a scenic route via Llangollen and Betws-y-Coed, arriving at Llanfairpwllgwyngyllgogerychwyrndrobwllllantysiliogogoch at 11:30am, where it was decided to stop for 1½ hours lunch break. It was an ideal shopping opportunity with several of us parting with cash in various shops including Peacocks and Edinburgh Woollen Mills, neither of which we have in Oswestry. We then drove around the island making a photo-stop enroute before reaching Beaumaris at 3:00pm. This provided a comfort stop plus time for tea and cake, followed by an ice-cream! We headed home ¾ hour later travelling via Penmaenmawr and Colwyn Bay reaching Whittington just before 6:00pm. I realise some would have liked a little longer here or there, but Anglesey is a fair journey.

On 11<sup>th</sup> July, 26 of us headed to New Brighton, somewhere many of us had not visited since our Sunday School days – we won't say how long ago that was. Again, we were slightly apprehensive of the weather forecast but the day proved to be one of a short sharp shower or two but nothing much. We arrived around 10:30am and the first stop for the majority of us was Costa Coffee. We then strolled along seafront and some indulged in a paddle. Fish and chips were on the agenda for lunch, no visit to the seaside is complete without. Then we had another stroll around the town before visiting an Ice Cream Parlour. We did manage time for a cup of tea and cake before Tom, our driver, shepherded us home. This month we are hoping to visit Dudley and the Black Country Museum with an optional canal boat trip.

Our next lunch at the White Lion is on Tuesday 22<sup>nd</sup> August at 12:00 noon. Still currently £10 per person it includes a two-course meal and a cup of tea or coffee. **Please contact ME on 01691 662236 if you wish to join us;** membership of the club is not a necessity, so why not join us one month, you do not have to commit indefinitely. However, if you would like to become a club member for 2023 the subscription is a very reasonable £10; if you are interested, please give me a ring on 01691 662236.

Sadly, it is with regret that we feel it necessary to cease the Monday afternoon Whist game due to lack of interest since the pandemic. Part of the club's activity programme for many years they were organised by Rita Moir and her late sister, Jan Drury; we thank Liz Corrin who tried to continue them. The evening sessions, held on the first Wednesday each month at 7:30pm, are well attended and have a small charge of £2.50 to cover tea/coffee and biscuits. These are run by Carol and Derek Pope – everyone is welcome not just club members; in July there were nine tables.

The weekly Thursday coffee mornings are very popular for a good natter and catch up; membership is not a requirement. Why not join us any time after 10:00am, we usually finish about 11:30 am and ask just £2.00 which is not a lot for a coffee (or two) together with a biscuit. If someone is celebrating a birthday then cakes and a tippie are sometimes on offer. This is a very friendly gathering and new people appear nearly every week, and return, so we can't be a bad lot.

It has been proposed that we run a "Once Loved Stall", as we did last year, on 28<sup>th</sup> August at the Whittington Together Fete to raise funds for the club. Any items you are able to donate will be gratefully received.

**August Events currently held at the hall:**

**Monday 7:30 – 9:30 pm** – Line dancing with Steve Mason for beginners/upper/improvers (phone for details 07963662426)

**Wednesday 1:30 – 2:30pm** Exercise Class – Due to the hot weather this has been suspended until 6<sup>th</sup> September

**Thursday 10:00 – 11:30am** Coffee

**ITEMS FOR YOUR DIARY FOR 2023**

15<sup>th</sup> August 9:00am First pick-up at Rosehill for a visit to the Black Country Museum, Dudley – coach £15, entrance to museum £15 and canal boat trip £10 – total £40

12<sup>th</sup> September Llandudno - £25

**19<sup>th</sup> September** The addition to the diary of a Bingo Evening for Club funds. Entrance £2 to cover first game and a drink, refreshments will be available. The evening will be run by Di and Phil Rogers; come along and have a game.

10<sup>th</sup> October Harvest Lunch

November Fish and Chip lunch plus a Coffee and Mince Pie morning

December 5<sup>th</sup>: Christmas Tea  
 December 15<sup>th</sup>: Christmas lunch at The Navigation

If you would like to join us on any of the above, please contact me.

**Gillian Roberts – Secretary 662236**



This seasons Friday evening All Stars and Dynamos programme has now come to an end after its 8-week run. Almost 50 children took part this year, more than double the 2022 figure. Youth training will still continue for a further six weeks

and anybody interested in joining in can contact Nigel Davies on 07974 228575 or email [nigeld1962@icloud.com](mailto:nigeld1962@icloud.com). The club are also looking for coaches to join the club; anyone interested should contact Nigel please.

#### Home Bowling Fixtures for August: Start time 7:00pm

<b>“A” Team</b>	Tuesday 8 <sup>th</sup> August	v	Chirk AAA A
	Tuesday 22 <sup>nd</sup> August	v	Church A
<b>“B” Team</b>	Wednesday 9 <sup>th</sup> August	v	Church C
	Wednesday 16 <sup>th</sup> August	v	Pentre Broughton B
	Wednesday 30 <sup>th</sup> August	v	Weston Crofte
<b>“C” Team</b>	Wednesday 2 <sup>nd</sup> August	v	Ye Olde Crofte B
	Wednesday 23 <sup>rd</sup> August	v	Llanrhaeadr B
<b>“D” Team</b>	Thursday 10 <sup>th</sup> August	v	Ye Olde Crofte B
	Thursday 17 <sup>th</sup> August	v	Llanrhaeadr C
	Thursday 31 <sup>st</sup> August	v	Llandrillo

#### Vets Team: Start time 1:00 pm

Friday 25<sup>th</sup> August v Bersham A

#### Car Boot Sales: Pitch Fee £6.00 and refreshments are available.

Friday 11<sup>th</sup> August 9:00am – 1:00pm  
 Monday 28<sup>th</sup> August 9:00am – 1:00pm

**Whittington Witches – Captain’s Report:** The Witches are loving their first official season! We have played 3 festivals and have managed to put out two teams for each one which is an amazing achievement for women’s cricket. In our league games we have played 3 matches, and put up a great fight, but we are still looking for that first league win! It will come! We are growing in size; learning every week; but, most of all, we are loving the sport and the company! Our journey has only just begun and we are so excited to see how it progresses. New players are always welcome – no cricket experience needed.

**August Fixtures:** Sat/Sun 12<sup>th</sup>/13<sup>th</sup> August – v Knockin & Kinnerley – TBC  
 Sun 20<sup>th</sup> August – Festival at Albrighton or Shrewsbury – TBC

**Wizards – Captain’s Report:** We have reached the half way mark of the Shrewsbury and District Evening league season sitting in 2<sup>nd</sup> place. The sides recent unbeaten run came to an end with a home defeat to 1<sup>st</sup> placed Conover Acorns, although this was followed up by a convincing win at Knockin & Kinnerley, with Scott Hales hitting an unbeaten 101.

**Event at the Club: Saturday 26<sup>th</sup> August** – A Car Treasure Hunt sets off from the club with the first car leaving at 10:30am and the final one at 2:30pm. With a scenic route (max 30 miles) and some strategic clues it will be a fun way to spend a Saturday and only £10 per car. Please contact Caroline O’Reilly or Abi Plowden to register your interest at [cjoreilly74@gmail.com](mailto:cjoreilly74@gmail.com) / [abi.lake85@hotmail.com](mailto:abi.lake85@hotmail.com)

Future planned events include an overnight Campout, Quiz, Pudding & Prosecco evening and children’s disco.

Don’t forget you can also hire the club for your own event please contact Jacqui Whitley to enquire on 01691 830901 or at [jacquiwhitley@yahoo.com](mailto:jacquiwhitley@yahoo.com)

**Caroline O’Reilly**

**Where does that saying come from?** – Playwright John Dennis (1657-1734) invented a special machine to produce the clap of thunder called for in one of his productions. The play was not a success and folded. However, when Dennis subsequently attended a performance of “Macbeth” at the same theatre, he was surprised to hear an identical clap of thunder. Realizing that it had come from his machine, he exclaimed indignantly: “See how the rascals

use me! They will not let my play run and yet they steal my thunder!" Thus, he made a lasting impression on the English language, if not its literature!

### RIDING AND STRIDING FOR CHURCH AND THE NHS AT 75



Now here is a story to bring bring tears to your eyes. I am about 10 years of age and have been ill for weeks with



respiratory infections. You know the sort of thing;

breathing difficult, eyes hardly open, coughing all day. One day, my father takes an unpaid day off work. He spray-painted motor cars for a living. We get on the train and head for Birmingham Children's Hospital. There followed a brief but thorough inspection by a specialist. Incidentally, in those days you did not see a consultant. A consultant was someone doctors consulted. He explains that for a start I need my tonsils removed. He then says to my father, "that will be three guineas please, payable now". I see the shock on my dad's face even now. You see that was just under half a week's wages for a man with no savings.

Now I hear you say, as you put away your hankies, what has that got to do with anything. Once again next month we will be making a contribution to the Shropshire Historic Churches Trust Sponsored 'Ride and Stride Events.' But maybe this year our theme might be 'Celebrating the NHS at 75.' Despite its current travails, it remains a beloved institution where you do not have to worry about losing half your monthly salary each time you have an appointment.

There are two ways we can do that. Firstly, we can on Saturday 9<sup>th</sup> September be ready in Church to welcome Riders and Striders from other places of worship in the County. We sign their Sponsor forms, get them to sign our Attendance Register, offer them small refreshments and show them the 'essentials'. You will remember how the whole thing works. Half of the monies which each church or chapel group raises immediately comes back to the participating church. The rest goes to boost the funds of the SHCT. We have in the past taken advantage of the Trust by successfully applying for grants for our necessary building work.

But there is a second way. Later in the autumn why don't we have our own

Sponsored Event by holding a kind of Park Amble, not Park Run, ho, ho! The main participants would be anyone over 75 years of age. We would show the world that, despite all the aches and pains, we are still here, largely thanks to the National Health Service. Just a thought. Will let you know when that second event is likely to happen. Oh yes, I should have said, I did soon after that hospital appointment have my tonsils taken out. It worked a treat and as someone recently pointed out I have probably not stopped talking since.

**Don Howard**

### PATIENTS ACCUSED OF NHS FRAUD

**healthwatch**  
Shropshire

Healthwatch Shropshire has heard from several patients that have been fined for fraud after unintentionally using their prescription prepayment certificate after its expiry date. The certificates are bought in advance from the NHS and can save money for those people who have a lot of regular prescriptions but are not eligible for free prescriptions. (Get a prescription prepayment certificate: Get a prescription prepayment certificate – GOV.UK ([www.gov.uk](http://www.gov.uk)))

The patients assumed that the staff at pharmacies check the certificate when they present it to collect their medication however this did not happen and the staff accepted out of date certificates. The patients were then fined by the NHS Business Services Authority (NHS BSA). The NHS BSA has told the patients that pharmacists are not required to check that certificates are valid and that it is the patient's responsibility.

Lynn Cawley, Healthwatch Shropshire Chief Officer, told us "The expiry date is printed on the certificate but most people assume in this day and age that there is a system behind the prepayment scheme that will flag up if the certificate is out of date and they don't check. The fines charged can run in to hundreds of pounds and so we advise everybody using the certificates to check the date before they use it each time.

We know that this has happened across the country and would ask people to contact us if they have had problems around the certificates so we can feed the information back to Healthwatch England. People can contact us online at <http://www.healthwatchshropshire.co.uk> or ring us on 01743 237884."

**Brian Rapson**

## DO YOU KNOW THE DIFFERENCE?

I was returning home one evening recently, just driving past the first mere after having come through Welshampton, and suddenly wondered why Kettlemere is a mere – and not a lake? Good job I can ask Google!

In essence it is to do with the depth of the water. Technically a mere is a lake, pond or wetland that is really shallow in relation to its size, a large surface in proportion to the volume of water it contains. Science will tell you a mere is a lake without a thermocline – and they can be found in other western European countries as well as in Great Britain. In simple terms a thermocline is the transition layer between the warmer mixed water at the surface and the cooler deep water below. It is relatively easy to tell when you have reached the thermocline in a body of water because there is a sudden change in temperature. The Oxford English Dictionary from 1609 does not say what a mere is, except that it looks black – which Kettlemere certainly does. The word once included the sea or an arm of the sea in its range of meaning but this marine usage is now obsolete (*OED*). In 1629 mere and marsh were becoming interchangeable but in 1876 mere was “heard, at times, applied to ground permanently under water”, in other words, a very shallow lake.



Can you remember all the names? – Blakemere, Colemere, Crosemere, Ellesmere (The Mere), Kettlemere, Newtonmere, Sweatmere and Whitemere. There are also two meres in Wales, Marloes Mere which is in Pembrokeshire, and Hanmer Mere. Back in Shropshire, Bomere Pool, between Bayston Hill and Conover is also another large mere and is classified as the most oligotrophic (nutrient poor) body of water on the Shropshire – Cheshire plain.

And this raises another question – one that Google cannot answer – why is the area around Ellesmere known as the “Shropshire Lake District”!

## WHITTINGTON WOMEN'S INSTITUTE

This month's meeting was well attended with twenty-three members present. It was started in the usual way with us singing, the uplifting, Jerusalem.

There were a few announcements and calls for volunteers to assist at Oswestry Show and Whittington Fete in August. We will be raising funds at the fete and spreading the word about WI membership. Last year our lucky bags proved very popular as did the plants and produce. This year we will also be selling jams and chutneys, in true WI style.

Our little competition was an arrangement of pressed flowers, mounted. We had some beautiful entries. The monthly swap was sunglasses and we had a fun time trying them all on. Anything left over from the swap is donated to charity. It was announced that we will be supporting a women's refuge in Wrexham and donating items for the women and children.

We had an interesting speaker, Nigel Baker, on Old Farm buildings of Shropshire. We all learnt some interesting facts and enjoyed the slide show. This was followed by our lavish tea organised by Joyce Howard, Marina McGuffy and Barbara Molesworth. Some friendly socialising followed as we ate and drank.

In August there is no meeting, but we will be gathering at the Castle for an informal picnic instead.

We have very recently had a social event with Great Ness WI here in Whittington, where we were able to sit outside in the sunshine, drink tea, eat cake, chat and play some games. Whilst the WI only has one official meeting per month, in fact there are always plenty of outings, classes, workshop and socials to attend. Members happily share lifts where needed and it is all very good natured and supportive. That's what the WI is all about: friendship and learning.

If you are considering the WI, we are very welcoming to new members. We meet in Whittington Community Centre on the second Wednesday of the month at 7:00pm. Just come along!

**Louise Idoux**

Oil – If they squeeze olives to get olive oil, how do they get baby oil?



**AUGUST at Whittington Castle –  
The Castle is open daily 9:00am – 5:00pm**



**1<sup>st</sup> August 10:00am – craft@thecastle** Join our informal crafters – patch-work, paint, scrap book, sketch or knit, do it with others. Find inspiration or do your own thing – there is coffee, cake and laughter. Everyone is welcome, a small fee applies.  
**5<sup>th</sup>/12<sup>th</sup>/19<sup>th</sup>/26<sup>th</sup> August 11:00am – 3:00pm “Knights**

**School”** Families are welcome to come, free of charge and without booking, for their little ones to try their hand at sword combat led by Whittington’s very own Knight.

**13<sup>th</sup> August 10:00am – 4:00pm Shropshire and Welsh Borders Jaguar Enthusiasts’ Club** invite all jaguar owners to join them on display in the Castle grounds, and invite any motoring fans to come and take a look. Admission is FREE, £2 parking charge applies.

**27<sup>th</sup> August 2:00pm The Folsky Company** present **The Ugly Duckling**  
Bring along your picnics and folding chairs to enjoy this open-air, family musical when a mother duck’s eggs hatch and one duckling looks different from all the rest. It sets off on their own to be met with hecklers, hunters, and cruel weather. Come and join it on its journey to discover who they really are. Enjoy live music, puppetry and colourful characters. **Tickets for each production:** Adults £15, Children/Concessions £12; Available on-line or directly from Castle

**6:30pm The Folsky Theatre Company** present **The Merry Wives of Windsor**, whatever the weather. Pack a picnic, a deck chair, and maybe a blanket or umbrella. A story of marriage, wealth, jealousy and lies. This comic humiliation of a foolish, would-be seducer is filled with live music and colourful characters.

**28<sup>th</sup> August 12:00noon – 4:00pm Whittington Together Village Fete**  
Admission is FREE, £2 parking charge applies. See page 7 for more details

**Kimberley Powell, Castle Manager**  
Telephone 01691 662500

E-mail: [info@whittingtoncastle.co.uk](mailto:info@whittingtoncastle.co.uk) -Website: [www.whittingtoncastle.co.uk](http://www.whittingtoncastle.co.uk)

**The nervous nun** – “People get nervous when they think that they have to call me ‘my Lord’, said an Irish bishop. “Especially the poor nuns. One was giving me a cup of coffee. As she pushed the sugar bowl towards me, she said, ‘How many lords, my lump?’”

**THE BRITISH ANTARCTIC EXPEDITION**

The 23<sup>rd</sup> August marks the 125<sup>th</sup> anniversary (1898) since the British Antarctic Expedition, so named as it was funded in London and despite there only being three British Nationals in the crew, left London and became the first to spend winter on the Antarctic mainland and cross the Ross Ice Shelf; it would be nearly two years before it returned to London in June 1900.

The expedition was led by Anglo-Norwegian, Carsten Borchgrevink, who had previously sailed to Cape Adare in the Ross Sea region of Antarctica on a Norwegian whaling expedition. Having failed to raise funding for his expedition in his native Australia, he came to England where after many rejections he met Sir George Newnes. Sir George was a wealthy magazine publisher, his best-known publications included the Strand Magazine and County Life. It was in the former that Sir Arthur Conan Doyle was first able to publish his Sherlock Holmes mystery, and he granted Borchgrevink £40,000 toward the expedition; equivalent to more than £6.5 million today.

The “Southern Cross” travelled via Hobart, Tasmania with 90 sled dogs and a crew totalling 31 men before reaching the Ross Sea on the 31<sup>st</sup> December. It would take 43 days to get through the pack ice before arriving at Cape Adare on 17<sup>th</sup> February 1899 where the ten winterers would live for the next year.



Things did not go smoothly and came close to total failure due to the weather conditions, and when the ship finally left them on the 1<sup>st</sup> March, to winter further north, the men left behind were the most isolated people on earth.

They lived in 2 huts, 1 was the living quarters and the other was used for storage. These cramped conditions where severe weather sometimes kept all of the men indoors for days on end became the pattern from that point onwards up to the present day. Many lessons on how-to-winter were learned; draughts made the hut cold and when these were blocked it led to near asphyxiation of some of the men from carbon monoxide poisoning as a result of the lack of ventilation; and excessive heat would become a problem when the stove was burning for cooking.

Seals, penguins and other birds went north to escape the severe Antarctic winter whilst the men settled into activities and routines of meteorological

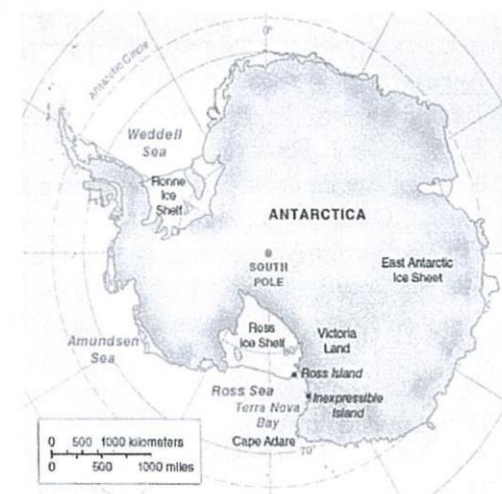
and magnetic observations, together with the collection of biological and geological specimens and surveys along the coast. There were frequent interruptions it being winter with no light, not even twilight, to contend with alongside the extreme weather conditions.

Several of the men had life and death near-misses when away from the hut due to changing weather and sea-ice conditions. A dog handler fell, unroped, dropped 60 feet down a crevasse becoming wedged head-down, another two feet to one side and he would have been lost in the deeper void of the crevasse. His companions could not hear his calls and eventually he managed to cut toe-holds with the aid of a pocket knife he just happened to have on him in the crevasse wall and climbed the 60 feet before emerging exhausted, very shaken and unable to speak. A Norwegian zoologist became ill and after shaking hands with each expedition individual to say goodbye, was suddenly to see the first Adelie penguin reappeared in his final moments. His symptoms pointed to beriberi caused by a dietary deficiency resulting in heart failure. His burial site had to be excavated with dynamite before the service could take place.

The expedition ship was due to return in late December but did not arrive until early on the 28<sup>th</sup> January 1900 when only the cook was awake. Captain Jensen of the Southern Cross entered the hut calling 'Post' and drooped his mail sack on the ground, the sleepers all awoke and realised their isolation was over. On the day they left the hut one person wrote in his diary "May I never pass another 12 months in similar surroundings and conditions." After setting sail the ship visited several locations including on the 16<sup>th</sup> February the first landing on the Ross Ice Shelf at the Bay of Whales; there 3 members of the expedition set out and reached 78deg 50'South, the furthest reached at the time.

On his return to London Borchgrevink did not receive a particularly warm welcome. The range of nationalities of those involved led to the "Britishness" of the expedition being seen as somewhat dubious; and the Royal Geographic Society had been preparing their own expedition before he left, this would become Robert Falcon Scott's Discovery Expedition. Borchgrevink was eventually made a Fellow of the RGS and in 1930 was awarded the Patron's Medal when the President made the following statement: "When the Southern Cross returned, this Society was engaged in fitting out Captain Scott to the same region, from which expedition much

was expected, and the magnitude of the difficulties overcome by Borchgrevink were underestimated. It was only after the work of Scott's Northern Party on the second expedition of 1912 . . . that we were able to realise the improbability that any explorer could do more in the Cape Adare district than Mr. Borchgrevink had accomplished. It appeared, then, that justice had not been done at the time to the pioneer work of the Southern Cross expedition, which was carried out under the British flag and at the expense of a British benefactor."



The team made many scientific observations and discoveries, the expedition had made many first landings in a number of locations, they had achieved a new farthest south and had discovered a way of gaining access to the Ice Barrier that would be used by Amundsen on his journey to the South Pole.

~~~~~

## C A M E O – COME AND MEET EACH OTHER in WHITTINGTON PARISH CHURCH



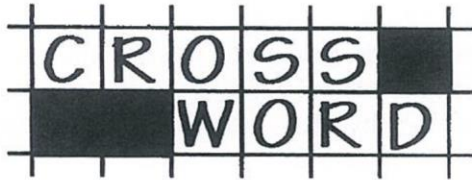
**7<sup>th</sup>/14<sup>th</sup> /21<sup>st</sup> AUGUST 1 0:30AM – 12:00NOON**

**Come along to our get together to meet other people from the community, there'll be tea, coffee and toast**

**Contact Suzan: [revwilliams1991@icloud.com](mailto:revwilliams1991@icloud.com)  
or Tel: 01691 238658**

~~~~~

What you really need in a vicar.... The Archdeacon was discussing the requirements for a new vicar with the church wardens of an empty parish. "What you need is a person of vision, with drive, determination and fire; a person who can inspire others; a person who can pull our diocesan cricket team out of last place..."



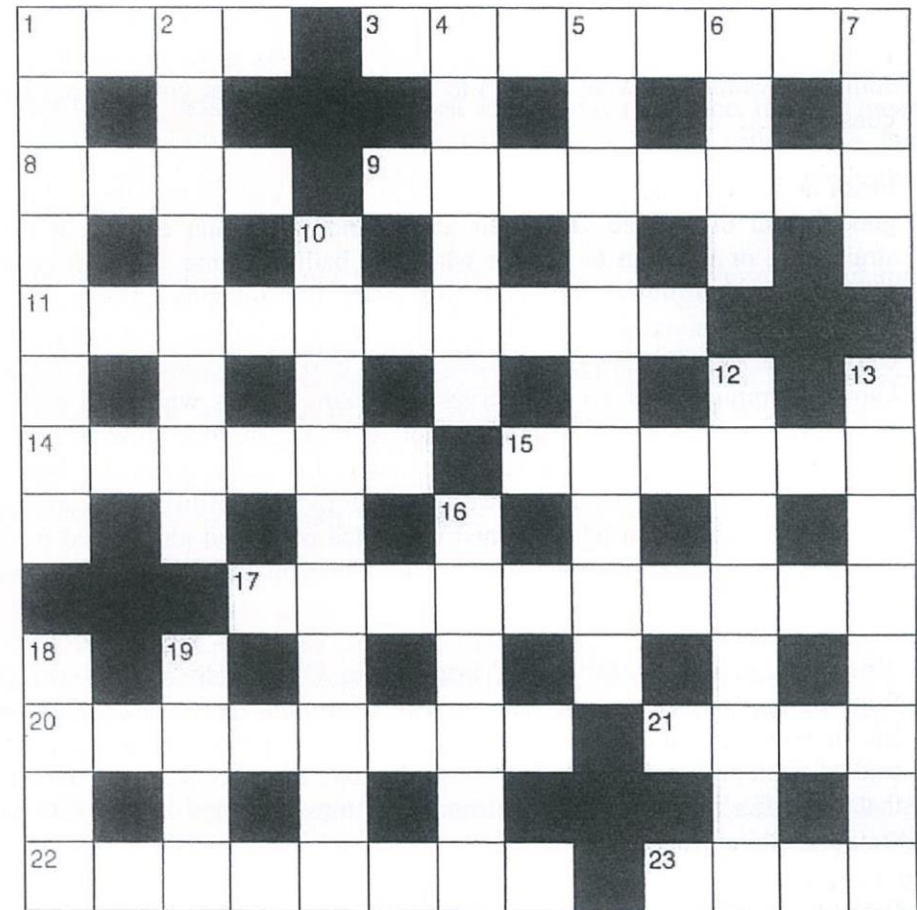
**Across:**

- 1 and 3 Two of the disciples who witnessed the transfiguration of Jesus  
 3 See 1 Across (Luke 9:28) (4,3,5)  
 8 'Let us draw — to God with a sincere heart in full assurance of faith'  
 9 O Simon is (anag.) (8) (Hebrews 10:22) (4)  
 11 Form of government under the direct rule of God or his agents (10)  
 14 How Jesus found his disciples when he returned to them after praying in Gethsemane (Luke 22:45) (6)  
 15 In The Pilgrim's Progress, the name of the meadow into which Christian strayed, which led to Doubting Castle (2-4)  
 17 Glad sin rat (anag.) (10)  
 20 Spinal column (Leviticus 3:9) (8)  
 21 Valley of the Balsam Tree with a reputation of being a waterless place (Psalm 84:6) (4)  
 22 'The oracle of Balaam son of Beor, the oracle of one — — sees clearly' (Numbers 24:3) (5,3)  
 23 Adam and Eve's third son (Genesis 4:25) (4)

**Down:**

- 1 David's great friend (1 Samuel 20:17) (8)  
 2 'The Lord... will bring me safely to his — kingdom' (2 Timothy 4:18) (8)  
 4 'I, Daniel, mourned for three weeks. I ate no choice food; — — or wine touched my lips' (Daniel 10:3) (2,4)  
 5 Seeking to vindicate (Job 32:2) (10)  
 6 Female servant (Isaiah 24:2) (4)  
 7 'For Christ died for — once for all' (1 Peter 3:18) (4)  
 10 'Offering spiritual sacrifices — to God through Jesus Christ' (1 Peter 2:5) (10)  
 12 Jesus said that some people had renounced this 'because of the kingdom of heaven' (Matthew 19:12) (8)  
 13 One of the three men thrown into the furnace for refusing to worship Nebuchadnezzar's golden image (Daniel 3:20) (8)  
 16 'You have — of good things laid up for many years. Take life easy; eat, drink and be merry' (Luke 12:19) (6)

- 18 'There before me was a white horse! Its rider held — — , and he was given a crown' (Revelation 6:2) (1,3)  
 19 Equipment to Charity Hospitals Overseas (1,1,1,1)



**Answers to July's Crossword**

**ACROSS:** 1, Sabbatical. 7, Opinion. 8, Laing. 10, Olga. 11, Galilean. 13, Sardis. 15, Severe. 17, Adultery. 18, Flea. 21, Swazi. 22, Acetate. 23, Revelation.

**DOWN:** 1, Sling. 2, Brim. 3, Annual. 4, Ill-timed. 5, Abilene. 6, Colossians. 9, Gennesaret. 12, Diatribe. 14, Roulade. 16, Errata. 19, Learn. 20, Lev

## Herbs for the bath

We have a long history of preferring baths, rather than the shower. This may be changing now for many reasons, including speed, convenience, mobility, sustainability or simply personal preference. However, there are plenty of people who still prefer to indulge in a good long soak in the tub and here are some suggestions on what goodies to add to the bath that you may not have considered...

Fresh herbs from the garden are readily available and oh so lovely! Pick a good bunch of scented Geranium leaves and stems and either put them straight in, or tie them to the tap while the bath is filling. Apart from the aroma being absolutely amazing, this plant has relaxing effects and is calming on inflamed skin (as long as you're not allergic). The same thing can be done with Roman Chamomile, which also has a glorious smell and a known calming effect on the nerves and skin. A less well used herb is ordinary garden mint or Spearmint (not to be confused with Peppermint, which is much stronger). The aromatic steam that comes from this herb in the bath is wonderful. Be lavish with it, as it's very uplifting and soothing. Any of these three can be combined with each other and also stored in the freezer, so that you can have an aromatic bath in the winter when your nerves need soothing.

Rosemary is fresh, uplifting and brightening. It can also be used straight from the garden any time of year. Known to stimulate poor circulation and lift the mood, this is a good one to add to a morning bath. The same can be said of fresh pine needles straight from the tree. Pine needles are useful for that great fresh scent but are also used for muscle aches and sprains and would combine well with Epsom salts for this purpose.

Walnut leaves are wonderfully aromatic and can be added to a bath. They are uplifting and have antiseptic properties. Enjoy!

**Louise Idoux**

**Smart worms** – Earth flew in all directions as the crimson-faced would-be golfer attempted to strike the ball. “Goodness,” he finally blurted to his caddie, “the worms around here will think there’s been an earthquake.” “Never mind,” said the caddie, “they are pretty smart – by now they will be hiding beneath the ball for safety.”



## On why it is so hard to read

The Rectory  
St. James the Least of All



My dear Nephew Darren

Your suggestion that every month at clergy meetings, someone should review a book of theology they have been reading, was bound to be greeted with uneasy resistance. It would mean that the majority would have to start *opening* books, rather than just occasionally dusting them. Possessing books does not necessarily imply that they are ever read.

Your high church colleagues will only read the Racing News, low church members the Railway Review, liberals the Knitting Weekly and those with tendencies towards non-conformism, the Vegetarian Times. Clerical studies may be lined with books, but they are largely for effect – and to hide damp patches on the wallpaper. Anything with hard covers will have been bought with the best of intentions - but somehow the vicarage lawn or the church hall drains will have taken precedence. And from what I know of your colleague over at St Crispin's, the only books he will buy will be to colour in.

I do try to keep up with my reading, but sleep mercifully intervenes after the first 10 minutes. On those days when I sit by my study window, so passers-by can see me deeply occupied in intellectual activity, it is most useful that my large tome on the letters of Eusebius can easily conceal an Agatha Christie inside it.

I confess that I was once gloriously put down when I tried to impress one of our blue stockings by mentioning a new edition of a Dostoevsky novel. She replied: “I have never read Dostoevsky in translation.” It only confirmed my suspicions that she had worked as a Russian spy in earlier years.

I was hugely impressed when, during the bitter cold of last winter, the Earl of Stowe, whose library would comfortably contain one of our cathedrals, told me he was slowly getting through its contents of tens of thousands of volumes. It was only sometime later that I discovered he meant he threw the occasional one on the fire, when he was running low on wood.

No, my dear Darren, the only literary activities that will spark interest will be

crosswords for the majority, or diocesan reports for the truly dedicated – with weighty tomes being used as door stops.

**Your loving uncle,  
Eustace**

~~~~~  
**Not late** – A little girl, dressed in her Sunday best, was running as fast as she could, trying not to be late for church. As she ran, she prayed “Dear Lord, please don’t let me be late! Dear Lord, please don’t let me be late!” While she was running and praying, she tripped on a curb and fell, getting her clothes dirty and tearing her dress. She got up, brushed herself off, and started running again. As she ran, she once again began to pray, “Dear Lord, please don’t let me be late! But please don’t shove me either!”



### RECIPE OF THE MONTH

Condensed milk is a magic ingredient when making no-churn ice cream – the end result will be creamy, smooth and not icy. Here are three options.

#### SIMPLE ICE CREAM

½ a 397g can sweetened condensed milk  
600ml pot double cream  
1 tsp vanilla extract

Put the condensed milk, cream and vanilla into a large bowl. Beat with an electric whisk until thick and quite stiff, a bit like clotted cream. Scrape into a freezer container or a large loaf tin, cover with cling film and freeze until solid.

#### BLACKCURRANT

500g Blackcurrants, fresh or frozen  
(400g defrosted if frozen)  
1 lemon, zested and juiced  
600ml double cream  
397g can condensed milk

Place 400g of the blackcurrants in a large saucepan with the zest of 1 lemon and juice of ½, plus 4 tbsp water.

Bring to the boil, then reduce to a simmer and cook for 6-8 mins until the fruit has broken down and the liquid has reduced and thickened slightly. Remove from the heat and allow to cool.

Pass the fruit through a sieve over a mixing bowl. Use the back of a spoon to press down on the fruit and squeeze out all the juice, then discard the remaining stalks and pulp from the sieve, and set aside the liquid.

Combine the double cream and condensed milk in a large mixing bowl. Whisk until thickened but not stiff, then add the fruit and stir to combine. Tip into a freezer-proof container, cover with a lid and freeze for at least 6 hrs. Remove from the freezer 30 mins before serving, then serve in bowls topped with the remaining blackcurrants.

#### CHOCOLATE

200g dark chocolate (at least 70% cocoa solids) chopped  
500ml double cream into small pieces  
340g can sweetened condensed milk  
1 tsp vanilla extract  
3 tbsp organic cocoa powder, sifted  
50g milk chocolate chip  
sea salt flakes, to serve (option)

Melt the chocolate in a heatproof bowl set over a pan of just-simmering water, ensuring the bowl doesn’t touch the water, or do this in the microwave in 20-second bursts until smooth and glossy. Leave to cool slightly.

Pour the cream, condensed milk and vanilla into a second bowl and beat for 3 mins using an electric whisk until slightly thickened and the beaters leave a trail in the mixture when lifted across the bowl. Be careful not to overwhip, as you don’t want the mixture to be too stiff – as soon as the beaters leave a trail, it’s ready.

Gently fold the melted chocolate and cocoa powder into the cream mixture until thoroughly combined, ensuring the spatula is reaching the bottom of the bowl so all the chocolate gets mixed in.

Fold in most of the chocolate chips, reserving a small handful.

Scrape the mixture into a 1-litre freezer-proof container, then scatter over the reserved chocolate chips. Cover and freeze for at least 6 hrs until firm but scoopable (*Will keep frozen for up to a month*).

When serving sprinkle with a pinch of sea salt, if liked.

**BBC Good Food**

## INTERNATIONAL BAT NIGHT: 26<sup>th</sup>/27<sup>th</sup> AUGUST

Did you know that there are 18 species of bat in the UK? And did you know that these bats make up almost a quarter of ALL our mammal species? The International Bat Night brings together bat groups and the Bat Conservation Trust, to provide many opportunities for bat walks and talks at dusk in local neighbourhoods across the country with the aim of encouraging thousands of people to see bats in their natural environment, by taking part in a range of events organised by local bat groups, wildlife trusts and countryside rangers.



The Shropshire Bat Group regularly monitors winter hibernacula in the old lead mines around Shropshire in association with the local caving society. It also surveys the Hoffman limekilns at Llanymynech and runs a programme of bat box surveys in the summer. They also undertake the Field Survey Waterway Survey, Sunset-sunrise Survey and Pipistrelle Colony Counts as part of Bat Conservation Trust's National Bat Monitoring Programme.

The group has regular talks, and organises regular walks for both members and the general public, and they can be seen at local shows around the county. The group also provides an annual 10 – 12week evening training course for people working towards their bat roost visitor licence.

The local secretary is Sue Worsfold at: [sbgcomms@virginmedia.com](mailto:sbgcomms@virginmedia.com) or via the group's facebook page if you would like more information.

**Great invention** – The boys had been up in the attic together helping with some cleaning. They uncovered an old manual typewriter and asked their mother what it was. She briefly explained, but they were still puzzled as to how it worked. So, the mother rolled some paper into the typewriter and began striking the keys, leaving black letters of print on the page. “WOW!” they exclaimed, “That’s really cool...but where do you plug it in?” “There is no plug,” she answered. “Then where do you put the batteries?” they persisted. “It doesn’t need batteries either,” she continued. “Wow! This is so cool!” they exclaimed. “Someone should have invented this a long time ago!”



## THE FIRST BRITISH ROCK RECORD

The first British ‘Pop Chart’ was published in the New Musical Express on 14<sup>th</sup> November 1952. Percy Dickins of the paper had telephoned approximately 20 record selling shops asking for a list of the 10 best-selling songs, this pool would later be expanded to 52. American crooner Al Martino took the inaugural Official Singles Chart Number 1 with his track ‘Here In My Heart’.



In 1958, EMI Producer Norrie Paramor, came across a young singer who fronted a group called The Drifters; later to become The Shadows. Most of the pop songs Norrie and his colleagues were recording at the time were covers of American compositions, a time before the singer-songwriter and before it became normal or even expected that artists would both write and perform their material.

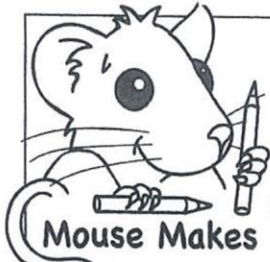
He invited the teenager, who called himself Cliff Richard, to audition for a recording contract and soon after Cliff found himself in Abbey Road’s Studio Two recording what would be his first ever single - a record that would give birth to the British rock n roll movement.

At 7:00pm on 24<sup>th</sup> July, Cliff arrived at Studio Two to cut an American tune called ‘Schoolboy Crush’ as the A-side; the planned B-side would be something different, a song ‘Move It’, written by Ian Samwell, a guitarist in Cliff’s backing group. The young engineer that day, Malcolm Addey, described the ‘Move It’ session as “real rock n roll”, it was put together in just 40 minutes.

Then, before the record was released, television producer Jack Good invited Cliff to perform on the show “Oh Boy”, specifying that ‘Move It’ had to be the track performed; as a result of which the song was moved to the A-side and ‘Schoolboy Crush’ to the B-side.

‘Move It’ reached number 2 in the charts following its release 65 years ago on 29<sup>th</sup> August 1968, and was described by John Lennon as “the first British rock record.” It undoubtedly changed Cliff’s life, having quit his office job to become a full-time musician just a month before it was released.

# CHILDREN'S PAGE



After Jesus miraculously fed 5,000+ people from two fish and five loaves, he sent his disciples off in a boat across the Sea of Galilee before going up a mountain by himself. Later in the night, as the boat was being blown and buffeted by the wind, Jesus came miraculously walking on the water towards them...

Read the story in: *Matthew 14: 22-27, Mark 6:45-56 or John 6:16-21*

**What did Jesus do when he went up on the mountain?**  
 \_\_\_\_\_  
*Matthew 14:23*

**What was the boat struggling against?**  
 The \_\_\_\_\_ and the \_\_\_\_\_  
*Matthew 14:24*

**What did Jesus say to his disciples?**  
 Do not be \_\_\_\_\_  
*Matthew 14:27*

**What did the disciples think Jesus was when they saw him walking on the sea?**  
 A \_\_\_\_\_  
*Matthew 14:26*

**Who walked out on the water to Jesus?**  
 \_\_\_\_\_  
*Matthew 14:29*

**What did Jesus say to Peter?**  
 Oh you of little \_\_\_\_\_ why do you \_\_\_\_\_  
*Matthew 14:31*

W F W A F R A I D      Y C K O C S  
 I N O T F E A R W A T E R M R B B O J  
 N N R L A L O N E K I N T O O O E M E  
 D I S C I P L E S A V E E U W A V E S  
 G G H E T E R R I F I E D N D T E S U  
 H H I A H T L G U D O U B T S Y N I S  
 O T P S S E A K P R A Y W A L K I N G  
 S F E E A R N O T H E R S I D E N K S  
 T O D D T V D G K N F S O N O F G O D

JESUS • DISCIPLES • BOAT • OTHER SIDE • CROWDS • MOUNTAIN • EVENING • ALONE • LAND • NIGHT • SEA WALKING • TERRIFIED • FEAR • COME • WATER • SINK • SAVE • INTO • CEASED • WORSHIPED • SON OF GOD

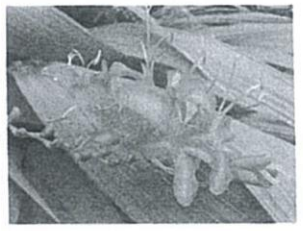
Answer the questions then find them in the word search Aug23 © dabo/ps noble • pashoump.co.uk

## A FEW HOURS IN THE GARDEN

1. Cut out old fruiting canes on raspberries to allow new growth to ripen.
2. Cut off the old stems of broad beans and pea vines at ground level to allow the nitrogen fixing bacteria in the roots to enrich the soil.
3. August is a good month to propagate heucheras by division of the roots.

### Flower of the month: Crocosmia masoniorum

This South African plant, with strong broad ribbed leaves and corm like roots, is still undergoing strenuous hybridisation. The tallest at 6 – 7 feet tall is the bright orange-red 'Lucifer'. Two other varieties, 'Emily Mackenzie' and 'Colombus' have larger copper-red flowers in shorter clumps. 'Golden Fleece', another short-clumped form is yellow. They grow well in light shade not too dry.



### Tree of the month: White Beam (Sorbus Aria)

This is a deciduous tree, growing up to 50 feet, with silvery white leaves in spring which remain felty white on the underside in summer. Clusters of white flowers form in spring, turning into berry-like red fruit in September. A good tree for a small garden and useful for birds and bees.



Shout – Verger's advice to visiting preacher: "You'll 'ave to shout very loud in this 'ere church, vicar. The agnostics are somefink terrible!"

**Whittington Parish Council News,  
 Tuesday 27<sup>th</sup> June 2023 Meeting**

Apologies for absence were received from Councillor Johnson.

**KEY ITEMS:** A member of the public spoke on the following matter: **Shropshire Council's Walking and Cycling Routes 10 Year Plan** and

shared with Councillors the questions that have been raised with Shropshire Council direct. Concerns in regards to the possible loss of parking spaces to make additional walk-ways and how this will impact blue badge holders. Query regarding the plans to support people to use cars less/monitor/track vehicle usage. It was NOTED that as these comments have been submitted by the resident directly to Shropshire Council no further action was required from the Parish Council.

**Police Report:** A verbal report was made by PCSO Pete Roberts.

**Your Local Police Officer and Community Support Officers Contact**

**Numbers:** Local Police Officer: - PC 3718 Kate Le'Clere – 07870219518  
Police Community Support Officers: - PCSO 6412 Dave Hughes – 07870219190; and PCSO 40279 Pete Roberts – 07870219019

**About your Team:** Safer Neighbourhood Teams work with local people and partners to identify, tackle and solve issues that matter to the community.

Officers continue to come to people when they need them and provide a high-quality service however you contact us – in person (on the street, at community bases and at PACT meetings), on the phone or online. In the event of a Police emergency call 999 for urgent attention; or ring 101 for non-emergency calls. The Police mobile numbers above will only be answered if the Officer is on duty. If your call is not answered please leave your name, number and a brief message; officers will respond at their earliest convenience when next on duty.

**Get in touch - 📞101** to talk to your local SNT or report a crime

✉️ [oswestryrn.snt@westmercia.pnn.police.uk](mailto:oswestryrn.snt@westmercia.pnn.police.uk)

🌐 [www.westmercia.police.uk](http://www.westmercia.police.uk)

📱 / 🐦 @Oscops - Only call 999 in an emergency, when a crime is in progress or life is in danger.

**Fitzwarine Play Area:** Councillor Davis had no issues to report following an inspection on 25<sup>th</sup> June.

**Shropshire Councillors Report:** Councillor Charmley reported on the following matters: **Item 94.c** – 30mph speed limit extension – now out for public consultation. **Item 94.d** Flooding outside of South Lodge, Burma

Road – this matter is being dealt with by Shropshire Council.

**Planning:** a) To note recent planning decisions published by Shropshire Council **I. Reference:** 23/01531/FUL (validated: 09/05/2023) **Address:** Pen-Y-Belan House, Hindford Shropshire, SY11 4NL **Proposal:** Erection of new three bay garage block on land to right front of house elevation, to rear of the next door property garage. **Decision:** Grant Permission

b) Consider the following Planning Applications: **I. Reference:** 23/02279/FUL (validated: 07/06/2023) **Address:** 32 Inglis Road, Park Hall SY11 4AN **Proposal:** Erection of a side extension. It was RESOLVED to MAKE A REPRESENTATION with the following comments: The Parish Council have no comments to make on this application.

**II. Reference:** 23/02437/TCA (validated: 08/06/2023) **Address:** Fern Grove, Station Road SY11 4BS **Proposal:** Reduce spreading branches over gardens to balance the crown with no more than 0.5m to be reduced from top of crown of 1Copper Beech within Whittington Conservation Area. It was RESOLVED to MAKE A REPRESENTATION with the following comments: The Parish Council have no observations or comments to make on this application.

c) There were no planning applications received after the issue of this agenda and included on Shropshire Council's website.

**Highways, Pavements and Footpaths:** Council members received an update on items a) – c) Following the letter of complaint sent to the Leader of Shropshire Council (minute 79.23 refers): **a)** Installation of a pavement between The Venue and Inglis Road (CIL Funding). **b)** Penybryn Pedestrian Crossing. It was NOTED that the letter had been acknowledged, however, a date for the meeting had not yet been arranged. Clerk will continue to follow this up. **c)** Extension of the 30mph speed limit on B5009 Whittington – Gobowen direction: The consultation (running until 12<sup>th</sup> July) was NOTED. **d)** Flooding outside of South Lodge, Burma Road – consider correspondence. It was RESOLVED that this is beyond the remit of the Parish Council as all correspondence has been sent to Shropshire Council and further correspondence should be sent to them directly.

**Streetlights:** Agree objectives for the Streetlight Working Group to investigate the conversion of the Parish Council's concrete streetlight columns. Consider funding the project through Neighbourhood Fund. The following objectives for the working group were AGREED: • The Working Group to scope out the project - number of columns (33), rough costs etc –



request that Highline conduct their annual structural survey as this will determine if any need to take priority. The Working Group to work with the Clerk on putting together a tender document due to the scale of the project. When the tender process is complete, the Working Group will review all submissions and present them to Full Council for consideration as part of the tendering process. It was RESOLVED that this project would be funded using Neighbourhood Fund.

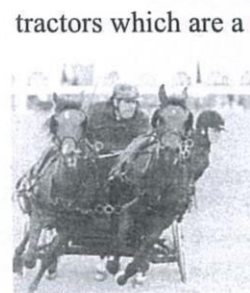
**Next meeting:** – There will be no meeting in August but Council business is running as normal; if you have any issues or queries, please contact the Clerk. The next meeting will be on **Tuesday 26<sup>th</sup> September at 7:00pm** in the Senior Citizens' Hall with limited space for members of the public wishing to attend. Future meeting dates, the full minutes (in draft form) along with membership of committees, working groups etc. will be published on the Parish Council website two days after each meeting, <https://whittingtonpc.com>, or via a copy from the Clerk Amy Jones. Tel: 01691 829571 email: [clerk@whittingtonpc.com](mailto:clerk@whittingtonpc.com). The Agendas for forthcoming meetings are available 3 clear days before the meeting, either on the Parish Council Website or the two Parish Notice – boards, one in Park Hall and one outside the School. **Jill Whitby**

### OSWESTRY SHOW

On the 5<sup>th</sup> August we can all enjoy the 136<sup>th</sup> Oswestry Show in its Park Hall grounds, it is one of the biggest one-day agricultural shows in the country. There is so much going on that visitors need the whole day to take it all in!

As well as many horses, from Shetland ponies right through to Heavy horses, in the cattle section the show will host the Welsh National Charolais Cattle Society Show. The sheep and pig sections will include rare breeds and will also include the ever-popular sheep shearing competition which this year forms part of the 2023 Welsh Lamb Shearing Circuit. A small livestock section will have rabbits, cavies and pigeons, so it is not just for those in the farming industry who can compete with their best livestock.

As well as all the various animals on display there will be over 120 trade stands to explore along with a variety of entertainment on the Village Green. There will be a Vintage Section with cars and motorbikes; along with



tractors which are a stark contrast to some modern-day ones on display elsewhere on the site. Entertainment in the main ring this year includes The British Scurry and Driving Team Trials. Ponies in single, or pairs, attached to 4-wheeled vehicles compete in speed trials through a course of 'gates.' Competitors race in a league, determined by the number of, and size of pony, accumulating points over the whole season. There will also be falconry displays and sheep dog trials in the main ring, as well as the Grand Parade. If you want more, then visit the Young Farmers Club, Horticultural, and the Craft, Business, Shopping and Food marquees; and not forgetting the W.I. hall where the Institutes compete for two trophies, the oldest of which donated in 1958 has been won by Whittington W.I. fifteen times.

This is all so different from the inaugural Show which took place on Friday 3<sup>rd</sup> October 1862 at the old Oswestry Smithfield, now the town's central carpark. It has been held in a number of different sites since then: Brogyntyn Park; Ellesmere Athletics Ground twice, sadly on both occasions, livestock entries were affected by outbreaks of foot and mouth disease; several other fields in and around the town before there was a period when the show did not take place, due to its unprofitability. 1953 saw the first year at its first long-term site, Mile End Farm, where it remained until 1981 apart from moving to Park Hall Camp in 1977 and '78. Then in 1982 the Agricultural Society bought the Park Hall Showground and the Show now has a fixed site and date in the calendar, the first Saturday of August each year. It is not sure when the Oswestry and District Agricultural Society was formed but early records show that a Show was held in 1817 when cattle were shown at the Wynnstay Arms, now the Wynnstay Hotel. The hotel was also the venue for a meeting, chaired by the then Lord Harlech, on the 23<sup>rd</sup> April 1862 which decided that grain and root competitions should be held in an effort to improve agricultural standards alongside a Show; these competitions still continue along with hedge-laying and the cups are presented at the Annual Dinner of the Society on the first Friday each February.

Five peers of the Realm have held the annual position of President since 1947 along with significant landowners from this border area. More recently the position has been held in alternate years by both working farmers and local business proprietors. In 2020 The Reverend Prebendary David North

was appointed as only the second cleric to the position, however due to the Covid lockdown which resulted in the Show being cancelled for two years, has only this year been superseded by Mr David Ellis, a farmer from Hindford, as President for 2023.

The weather is all important to the occasion – but it cannot be controlled! High temperatures encourage visitors, high consumption of ice cream and drinks – but it unsettles cattle, and pig owners need Factor 50 for their pigs, they redden up quicker than a fair-skinned brunette. And if a fine day follows a long spell of showers and heavy rain, farmers can be more desperate to harvest their grain crops than attend. On another occasion all the tents and the grandstand were virtually flattened by high winds and a few years ago everyone had to run for cover due to a hailstorm in the late afternoon – thankfully all the judging had been completed. Fingers crossed!

And one last stop to include on your day – the ‘Bottle Stall’ being run in aid of our Parish Church.



*The start of the football season was  
the cause of universal joy*

## WHITTINGTON ORGANISATIONS

**CRICKET/BOWLING CLUB SECRETARY:** Tel:830901  
Jacqui Whitley – jacquiwhitley@yahoo.com

**MEMBERSHIP SECRETARY:** Ian Chalmers  
Ianwenachalmers@hotmail.com

**BOWLING SECRETARY:** Hannah Hampson  
whittingtonbowlssec@outlook.com

**TREASURER:** grahamhumphreys63@gmail.com Tel:622385

**WHITTINGTON WITCHES:** Caroline O'Reilly,  
Whittington Cricket Secretary – cjoreilly74@gmail.com Tel:07525 212 905

**COMMUNITY CENTRE BOOKING SECRETARY:**  
Mrs Kath Griffiths Tel:662116

### SHROPSHIRE COUNCILLOR FOR WHITTINGTON AND WEST FELTON:

Mr Stephen Charmley, The Coppers, Park Street, Oswestry SY11 2HF  
e.mail:Steve.charmley@shropshire.gov.uk –www.stevecharmley.co.uk  
Tel: 07870280747

**WHITTINGTON PARISH COUNCIL:**  
Amy Jones (Clerk to the Council) Tel: 829571  
Held the fourth Tuesday in the month – clerk@whittingtonpc.com  
http://www.whittingtonpc.com

**WHITTINGTON YOUTH CLUB:** (Facebook page: Whittington Youth). Meets Thursday evening 7:00pm – 8:30pm in the Senior Citizens' Hall; entry fee £2. Activities for 10-16-year-olds supervised by qualified youth workers and activity coaches from The New Saints FC Foundation Ltd. Telephone 01691 889791 or email: info@tnsfcfoundation.org.uk

**FRIENDS OF WHITTINGTON CEMETERY:** Working parties are held throughout the year – we are always grateful for any help  
Sally Leppanen Tel: 658163 Mob: 07835338032 sally@leppanen.co.uk  
Mike Brunt Tel: 01691 661874 or Mob: 07855772527

## WHITTINGTON ORGANISATIONS

### **WOMEN'S INSTITUTE:**

Second Wednesday in the month in the Community Centre

Secretary: Sophie Anderson

Tel: 07951 793350

### **WHITTINGTON CASTLE PRESERVATION TRUST:**

Chairman: Jonjo Evans

Tel:671300

Castle Manager: Ms Kimberley Powell

Tel:662500

### **BELL RINGING:** Details from Brian Rothera

Tel:657778

### **BROWNIES, GUIDES:**

6:00-7:15pm Thursday except in school holidays in the Community Centre

Brown Owl: Mrs D. Gough, 2 Newnes Barns, Ellesmere

Tel:624390

### **BEAVER, CUBS & SCOUT INFORMATION:**

Contact: District Commissioner Nickie Phillips for details at:

Nickie.Phillips@scouts.org.uk

### **WHITTINGTON UNDER FIVES GROUP:**

Sessional and extended hours Carer and Toddler Sessions

Leaders: Dawn and Mandy

Tel:670127

Meet in the Community Centre 9:00am – 3:00pm

### **SENIOR CITIZENS:**

Monday Whist Drive, Thursday Coffee Morning

All meetings in the Senior Citizens Hall

Secretary: Mrs Gillian Roberts, 4 Western Avenue

Tel:662236

### **MOBILE LIBRARY SERVICE:**

The Mobile Library will stop in the cul-de-sac by the Three Trees/White Lion on alternate Tuesdays between 2:55pm – 3:55pm.

**CHURCH WEBSITE:** [www.whittingtonchurch.org.uk](http://www.whittingtonchurch.org.uk)

**MESSY CHURCH:** <https://m.facebook.com/stjohnthebaptistwhittington/>

# David Davies & Sons

## FUNERAL DIRECTORS

ESTABLISHED 1840



A caring, compassionate  
and discreet service  
from a family business  
since 1840



1 Upper Church Street

Oswestry • SY11 2AA

Oswestry **01691 653116** (24 hrs)

[www.daviddaviesandsons.co.uk](http://www.daviddaviesandsons.co.uk)